

**Ski Antibody**  
**Catalog # ASC10101****Specification**

---

**Ski Antibody - Product Information**

Application	WB, IF, E
Primary Accession	<a href="#">P12755</a>
Other Accession	<a href="#">P12755</a> , <a href="#">134517</a>
Reactivity	Human
Host	Rabbit
Clonality	Polyclonal
Isotype	IgG
Application Notes	SkiP antibody can be used for detection of Ski by Western blot at 1 - 2 µg/mL. Antibody can also be used for immunohistochemistry starting at 20 µg/mL. For immunofluorescence start at 20 µg/mL.

**Ski Antibody - Additional Information**

Gene ID	6497
<b>Other Names</b>	
Ski Antibody: SGS, SKV, Ski oncogene, Proto-oncogene c-Ski, v-ski sarcoma viral oncogene homolog (avian)	

**Target/Specificity**  
SKI;**Reconstitution & Storage**

Ski antibody can be stored at 4°C for three months and -20°C, stable for up to one year. As with all antibodies care should be taken to avoid repeated freeze thaw cycles. Antibodies should not be exposed to prolonged high temperatures.

**Precautions**

Ski Antibody is for research use only and not for use in diagnostic or therapeutic procedures.

**Ski Antibody - Protein Information****Name** SKI**Function**

May play a role in terminal differentiation of skeletal muscle cells but not in the determination of cells to the myogenic lineage. Functions as a repressor of TGF-beta signaling.

**Cellular Location**

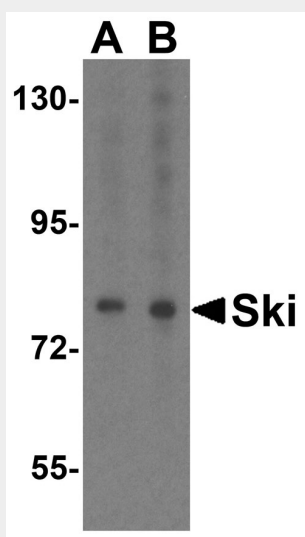
Nucleus.

## Ski Antibody - Protocols

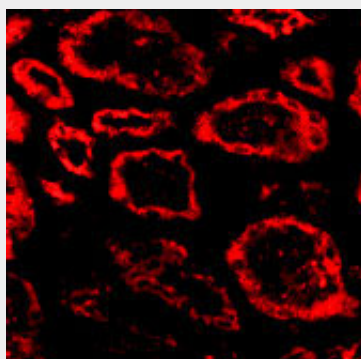
Provided below are standard protocols that you may find useful for product applications.

- [Western Blot](#)
- [Blocking Peptides](#)
- [Dot Blot](#)
- [Immunohistochemistry](#)
- [Immunofluorescence](#)
- [Immunoprecipitation](#)
- [Flow Cytometry](#)
- [Cell Culture](#)

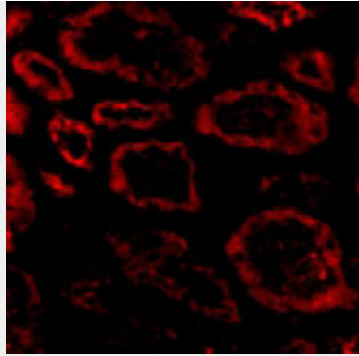
## Ski Antibody - Images



Western blot analysis of Ski in HeLa cell lysate with Ski antibody at (A) 1 and (B) 2  $\mu\text{g/mL}$ .



Immunofluorescence of Ski in human kidney tissue with Ski antibody at 20  $\mu\text{g/mL}$ .



Immunofluorescence of Ski in Human Kidney cells with Ski antibody at 20 µg/mL.

### **Ski Antibody - Background**

Ski Antibody: TGF-beta is a ubiquitously expressed cytokine that signals through the Smad protein family to regulate numerous cellular processes such as embryonic development and tumorigenesis. This signaling is negatively regulated by Ski, the mammalian homolog of the transforming protein of an avian retrovirus that induces oncogenic transformation of chicken embryo cells, and the related protein SnoN. Ski functions by binding to the Smad proteins and preventing their phosphorylation, thereby inhibiting their ability to bind DNA and activate the transcription of downstream genes. Ski will also bind to the Smad proteins specific to bone morphogenic proteins (BMPs) and block BMP signaling in mammalian cells.

### **Ski Antibody - References**

Derynck R, Akhurst RJ, and Balmain A. TGF- $\beta$  signaling in tumor suppression and cancer progression. Nat. Genet. 2001; 29:117-129.

Li Y, Turck CM, Teumer JK, et al. Unique sequence, ski, in Sloan-Kettering avian retrovirus with properties of a new cell-derived oncogene. J. Virol. 1986; 57:1065-72.

Luo K. Ski and SnoN: negative regulators of TGF- $\beta$  signaling. Curr. Op. Gen. Dev. 2004; 14:65-70.

Massague J and Wotton D. Transcriptional control by the TGF-b/Smad signaling system. EMBO J. 2000; 19:1745-54.